



HYDROTEX[®]

PIPE WRAP

The HYDROTEX[®] fabric formwork system designed to custom fit, wrap, and protect oil and gas pipelines.

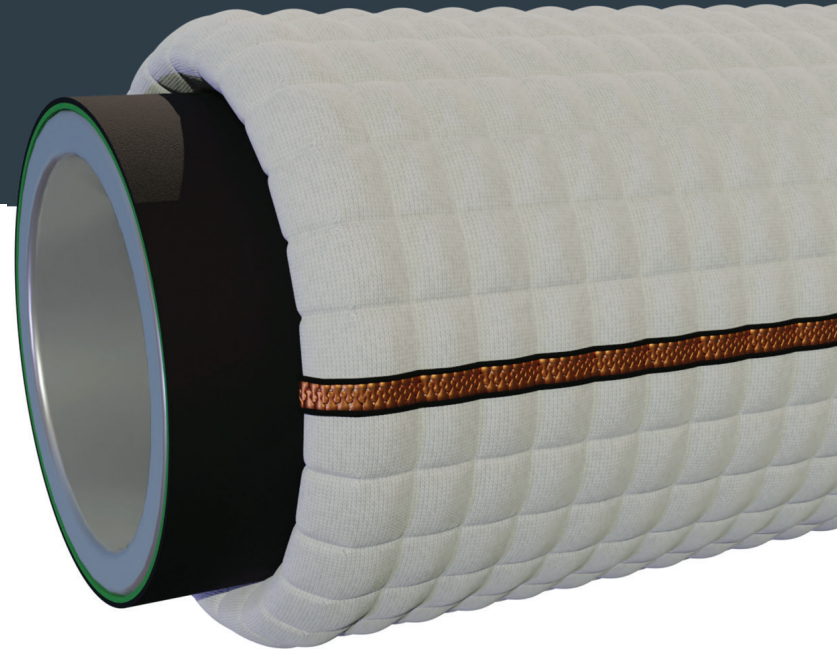
Hydrotex[®] Pipe Wrap arrives to your project site completely fabricated, providing you the easiest, fastest, and safest hard armoring solution for oil and gas pipelines. Constructed of high-strength polyester double-layer formwork, the structure of Hydrotex[®] Pipe Wrap is maintained by internal cabling along with internal pressure created by pumping concrete.

In contrast to other pipe wrap solutions requiring a laborious, multi-step process, Hydrotex[®] Pipe Wrap significantly simplifies the installation process while reducing equipment and labor requirements.

Like all Hydrotex[®] fabric formwork solutions, pipe wrap can be customized to meet your projects specific requirements. This means you are not restricted to standard sizes, but can accommodate any pipe circumference, and installation environment (above ground, underground, underwater, and subsea).

Our Process, Together

Our motivation is a successful solution and installation, not a product transaction. That's why our team supports you with everything from solution identification through technical field training and support, for the good of your project, the good of your business, and the good of the world.



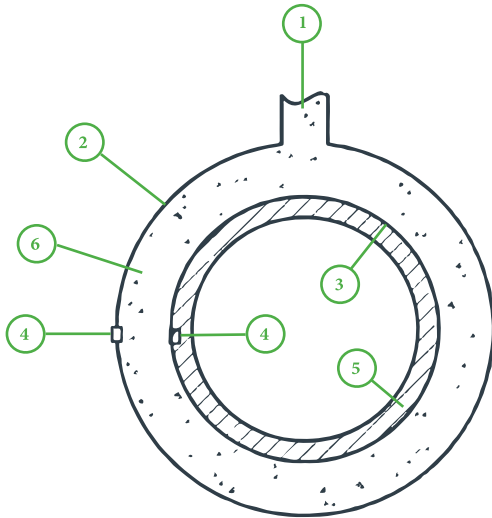
Synthetex HYDROTEX[®] pipe wrap only requires zipping and concrete filling.



Synthetex engineers meet with on site workers to ensure proper installation.



DESIGN & STRUCTURE



The structure of Hydrotex® pipe wraps allows for all of the same functionality of more complicated pipe armoring systems, but in a lighter, cheaper, and more flexible package.

1. Concrete filling port
2. Outer layer of fabric formwork
3. Inner layer of fabric formwork
4. Zippered connection
5. Pipeline
6. Fine aggregate concrete

HYDROTEX fabric formwork contains a complex system of internal cables that ensures a uniform thickness and therefore predictable and consistent physical properties of the final Pipe Wrap.



INSTALLATION GUIDELINES

1. Pipe wrap form work is placed in desired location of the pipe to be protected with the filling sleeve of the top of the pipe and the zipper on the side of the pipe.
2. Zipper is used to secure form work starting with the internal layer and proceeding to the outer layer then securing the two zipper ends together to prevent unraveling.
3. Cradle support is secured to pipe with proper spacing to allow for correct thickness of the form work.
4. Concrete hose is inserted into filling sleeve and the form work is filled until correct thickness is achieved.
5. After appropriate cure time, the cradle is removed from the pipe and can be used in the next location.



HYDROTEX fabric formwork is very versatile and can be used in multiple applications and location types.